

# ALWAYS AT THE FOREFRONT OF INNOVATION!

As global innovation leader for dental equipment, we continuously invest in research and thus in the future of modern dentistry. By networking digital technologies with integrated solutions and optimizing the treatment workflow, we create improved treatment results, more comfort and safety for the patient as well as time and cost savings in everyday work. The combination of constant innovative power and globally growing sales and service structures makes Sirona the global market leader trusted by thousands of practices and labs around the world. **Enjoy every day. With Sirona.**



#### CAD/CAM systems

From pioneer to new standard. For almost 30 years we have been developing digital dentistry and creating new possibilities for the future practice and lab.



#### Imaging systems

Best image quality with the lowest dose. More than 100 years of developing x-rays for the dental practice make us the number 1 innovation partner.



#### Treatment centers

The business card of modern practices. We are striving to create the ideal ergonomic and innovative center. Individually tailored to the well-being and demands of the patient and dentist.



#### Instruments

Advantages that speak for themselves. We make sure that we provide the right balance of proven quality, individual ergonomics and innovative technology for user-friendly work.



#### Hygiene systems

Competence that gives you safety. When it comes to hygiene in the practice, we do not take any shortcuts.

The Dental Company

**sirona.**

SIRONA INSTRUMENTS PREMIUM, COMFORT AND ECONOMY

# THREE CLASSES, ONE CLAIM: ONLY THE BEST INTO YOUR HANDS.



SIRONA.COM

The Dental Company

**sirona.**



# SIRONA INSTRUMENTS – UNIQUE IN EVERY CLASS.

As a dental surgeon, you know good results highly depend on your knowledge and manual skills. For a perfect performance however, the right instruments also play an important part: only if your instruments are lightweighting in the hand and can be handled without efforts, you will achieve precise results. With Sirona's three new instrument classes, Premium, Comfort and Economy, we are consistently pursuing this claim. Regardless the class you opt for: you get innovative state-of-the-art products, which you will enjoy working with. **Enjoy every day. With Sirona.**



#### Titan, the exclusive material

As the only manufacturer in the dental field worldwide, we are using super-plastic titanium forming technology in our instruments' manufacturing process. With this unique combination of process and material, we succeeded in producing instruments resulting to be amongst the lightest in their class.



See Sirona's contra-angle handpieces in action.



See Sirona's new turbines in action.



Get the new contra-angle handpieces and turbines as iBook content on your iPad.

# WE ONLY PUT THE BEST INTO YOUR HANDS.

T1 – ERGONOMICS IS ONLY EFFECTIVE IF YOU DON'T NOTICE IT.

Ergonomic and durable: Sirona Premium instruments lie perfectly within your hand and thus guarantee lasting precise results.

All T1 instruments are absolutely sterilization resistant and thanks to the integrated anti-retraction stop, hygienic preparation can be done perfectly.

HYGIENIC

DURABLE

Our Premium Class was designed using innovative long-life technology. Due to the "diamond-like carbon" (DLC) coating of the ball bearings all Premium instruments are extremely resistant and durable.

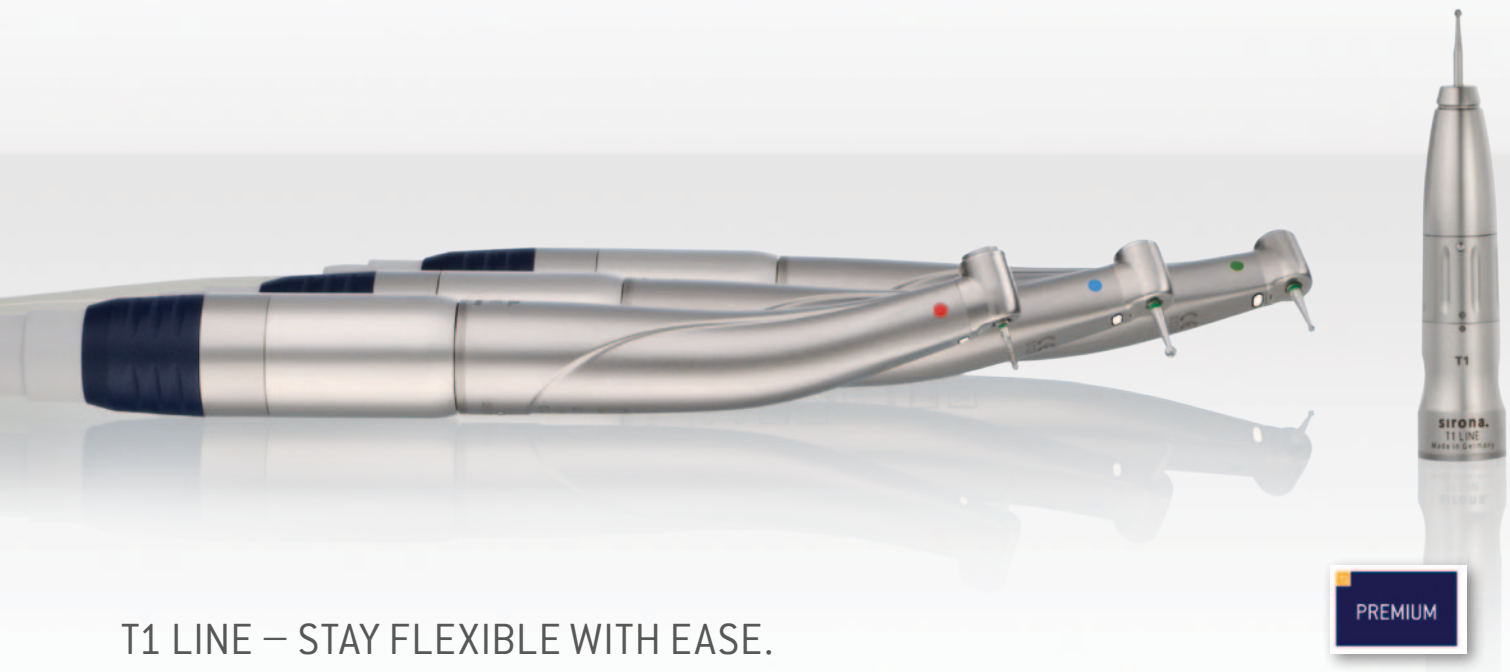
ERGONOMIC

Thanks to its flowing design and the particularly light titanium sleeves, you will be able to work relaxed and without fatigue when treating patients.





# STRAIGHT AND CONTRA-ANGLE HANDPIECES.



## T1 LINE – STAY FLEXIBLE WITH EASE.

The high-quality straight and contra-angle handpiece series of the T1 LINE convince with ergonomic design and behave light as a feather, thanks to its titanium sleeves. This guarantees fatigue-free working and precise results. You stay flexible with the ISO interface, regardless of the treatment unit you are using.

- Universal ISO interface
- Ergonomic and light titanium sleeves
- DLC coated ball bearings
- ISOslider® for motors with and without illumination
- 3 years guarantee
- Optimal illumination for great visibility during treatments
- Perfect hygiene: can be sterilised and heat disinfected



## T1 LINE – TECHNICAL DATA OVERVIEW:

Types			Gear ratio/ reduction	Speeds	Head diameter [mm]	Head height [mm]	Equipment	REF.
T1 LINE C 200 L	☼	●	1:5	Up to approx. 200.000	Approx. 9.7	Approx. 15.2	Dia. 1.6 FG	33 28 452
T1 LINE C 200 L mini	☼	●	1:5	Up to approx. 200.000	Approx. 8.7	Approx. 13.4	Dia. 1.6 FG	60 06 303
T1 LINE C 40 L	☼	●	1:1	Up to approx. 40.000	Approx. 8.7	Approx. 12.4	Dia. 2.35 WB	33 28 437
T1 LINE C 6 L	☼	●	6:1	Up to approx. 6.000	Approx. 8.7	Approx. 12.4	Dia. 2.35 WB	33 28 429
T1 LINE C 1.6 L	☼	●	24:1	Up to approx. 1.600	Approx. 8.7	Approx. 12.4	Dia. 2.35 WB	33 28 411
T1 LINE H 40 L	☼	●	1:1	Up to approx. 40.000	–	–	Dia. 2.35 HB/WB	60 31 277

Contra-angle handpiece, red 1:5 standard with 3-nozzle spray/mini with 1-nozzle spray, contra-angle handpieces, blue 1:1 and green 6:1/24:1 with 1-nozzle spray, straight handpiece, blue 1:1 with 1-nozzle spray.



## T2 LINE – THE COMFORTABLE SOLUTION.

T2 LINE is the robust straight and contra-angle handpiece series of the Comfort Class. This is where the Sirona quality and know-how come together providing this unique product range. With its functionality and reliability, you will be able to concentrate wholeheartedly on treating the patient.

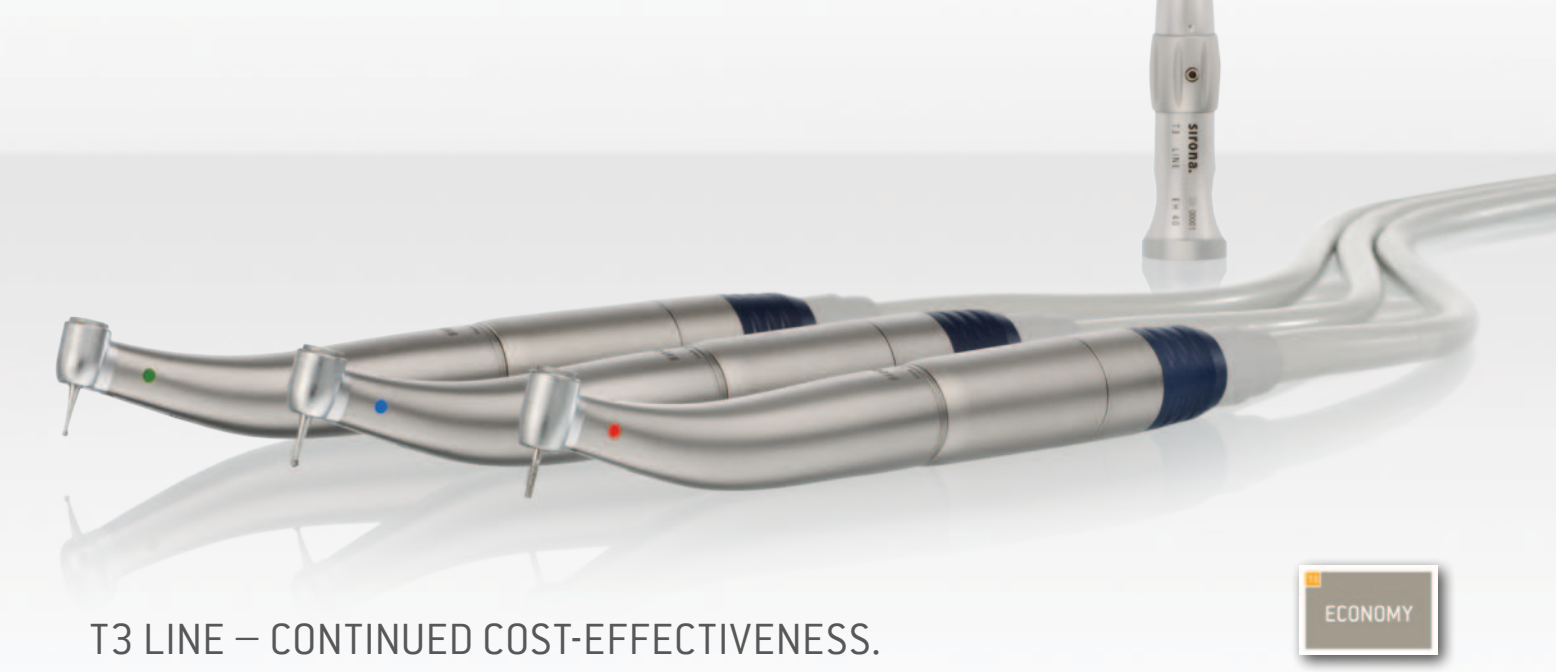
- Universal ISO interface
- Pleasant and easy to grip thanks to its titanium sleeves
- ISOslider® for motors with and without illumination
- 2 years guarantee
- Optimal illumination for great visibility during treatments
- Perfect hygiene: can be sterilised and heat disinfected



## T2 LINE – TECHNICAL DATA OVERVIEW:

Types			Gear ratio/ reduction	Speeds	Head diameter [mm]	Head height [mm]	Equipment	REF.
T2 LINE A 200 L	☼	●	1:5	Up to approx. 200.000	Approx. 9.7	Approx. 15.2	Dia. 1.6 FG	63 76 177
T2 LINE A 40 L	☼	●	1:1	Up to approx. 40.000	Approx. 9.7	Approx. 13.2	Dia. 2.35 WB	63 76 185
T2 LINE A 6 L	☼	●	6:1	Up to approx. 6.000	Approx. 9.7	Approx. 13.2	Dia. 2.35 WB	63 76 193
T2 LINE AH 40 L	☼	●	1:1	Up to approx. 40.000	–	–	Dia. 2.35 HB/WB	63 76 201

Contra-angle handpiece, red 1:5 with 3-nozzle spray, contra-angle handpieces, blue 1:1 and green 6:1 with 1-nozzle spray, straight handpiece, blue 1:1 with 1-nozzle spray.



## T3 LINE – CONTINUED COST-EFFECTIVENESS.

T3 LINE is the long-term option from the Economy Class. The instruments with their extremely robust titanium sleeves are sturdy and an investment that will give you joy for years to come.

- Universal ISO interface
- Extremely robust titanium sleeves
- Perfect hygiene: can be sterilised and heat disinfected



## T3 LINE – TECHNICAL DATA OVERVIEW:

Types			Gear ratio/ reduction	Speeds	Head diameter [mm]	Head height [mm]	Equipment	REF.
T3 LINE E 200		●	1:5	Up to approx. 200,000	Approx. 9.7	Approx. 15.2	Dia. 1.6 FG	63 92 679
T3 LINE E 40		●	1:1	Up to approx. 40,000	Approx. 9.7	Approx. 13.2	Dia. 2.35 WB	63 92 687
T3 LINE E 6		●	6:1	Up to approx. 6,000	Approx. 9.7	Approx. 13.2	Dia. 2.35 WB	63 92 695
T3 LINE EH 40		●	1:1	Up to approx. 40,000	–	–	Dia. 2.35 HB/WB	63 92 711

Contra-angle handpiece, red 1:5 with 3-nozzle spray, contra-angle handpieces, blue 1:1 and green 6:1 with 1-nozzle spray, straight handpiece, blue 1:1 with 1-nozzle spray.

# SPECIAL CONTRA-ANGLE HANDPIECES.

## THE RIGHT ATTACHMENT FOR EVERY TASK.

The Sirona Premium Class offers an extensive special contra-angle handpieces portfolio. You find a fitting solution for every task without fail.



**PROPHY**  
**For prophylaxis**  
This contra-angle handpiece enables brilliant polishing of teeth and material surfaces in connection with brushes and caps.



**EVA 04 L/11 L**  
**For micropreparations**  
Due to the great flexibility of the file adjustment, this contra-angle handpiece is especially good for polishing and removing composite residues and for smoothing root surfaces.



**ENDO L**  
**For endodontics**  
The 2-in-1 root canal preparation principle is based on the concept of offering a single contra-angle handpiece that enables efficient utilization of both manually and machine driven files. This ultimately means more freedom and economy.



**CONDENS**  
**For amalgam fillings**  
Using this contra-angle handpiece in connection with DENTATUS AVA tips, amalgam fillings can be condensed outstandingly.

## T1 LINE SPECIAL CONTRA-ANGLE HANDPIECES – TECHNICAL DATA OVERVIEW:

Types			Gear ratio/ reduction	Speeds/ action	Equipment	T1 LINE REF.
PROPHY	☼		2.4: 1	Approx. 5,000	Snap-on & Screw-in	18 94 901
EVA 04 L	☼		–	Stroke 0.4 mm	–	33 29 260
EVA 11 L	☼		–	Stroke 1.1 mm	–	41 77 015
ENDO L	☼		–	Movement ± 30°	Shaft Dia. 3.6–4.0/Adapter Dia. 2.35	58 69 552
CONDENS	☼		–	Approx. 12,000	–	18 94 737



T2 – QUALITY IS EASY TO GRASP, WHEN YOU HAVE SIRONA IN YOUR HAND. Functional and reliable: Sirona Comfort instruments convince especially due to their high quality of grip and robust workmanship.

T3 – STABILITY ONLY PAYS OFF IN THE LONG TERM. Stable and economical: Economy instruments from Sirona are of the highest quality and pay for themselves time and time again.

ECONOMICAL

An investment in our Economy instruments is money soundly invested for the long term.

HYGIENIC

The high-quality sleeve is simple and easy to clean. The T2 and T3 instrument classes can also be heat disinfected and are sterilization resistant.

COMFORT

T2

STABLE

The titanium sleeves ensure that our instruments remain sturdy for years to come.

RELIABLE

You can rely on Sirona Comfort instruments with their robust ball bearings in every situation.

FUNCTIONAL

The grip and shape in combination with the titanium finish, provide an optimum of operating comfort when treating patients.

# DENTAL TURBINES: THE POWER OF SILENCE.

The extensive portfolio of Sirona turbines offers dental turbines for every possible wish. All the turbines have one thing in common: complete operating control at maximum output – and quieter than ever. Simply choose your favourites within the Premium, Comfort and Economy range according to your personal preferences and method of working.

THE NEW GENERATION OF TURBINES:

POWERFUL

Significantly more power with smaller head size compared to previous turbines

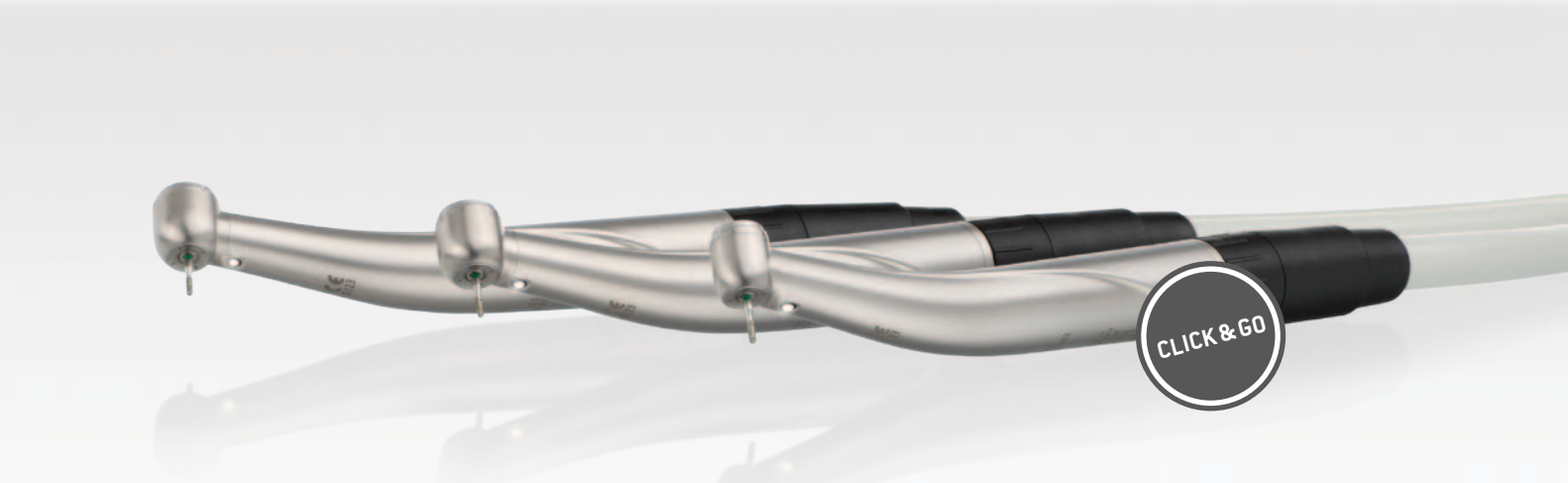
CONTROLLED

High torque at a constant level ensures considerably higher operating smoothness

QUIET

The 4-nozzle spray reduces the noise level and increases comfort for the patient and practitioner

# DENTAL TURBINES.



## T1 TURBINES – PERFECTION THAT FITS IN YOUR HAND.

The Premium Class turbines lie perfectly balanced in your hand. Whether you choose T1 CONTROL, T1 Boost or T1 mini, all the turbines shine with their high performance, give you total control at all times and are very quiet.

- Ergonomic lightweight titanium sleeves
- CONTROL function: continuous operation at low noise level
- DLC coated ceramic ball bearings
- Optimal illumination for great visibility during treatments
- Protective-Head-System (PHS) with dual anti-retraction stop
- Perfect hygiene: can be sterilised and heat disinfected
- Click&Go: The fast change to Sirona



The 4-nozzle spray makes the T1 turbines the quietest in their class.

## T1 TURBINES – TECHNICAL DATA OVERVIEW:

Types		Power (W)	Head diameter (mm)	Head height (mm)	Weight (g)	Non-load speed (min <sup>-1</sup> )
T1 CONTROL	☀	Up to 22	Approx. 12.4	Approx. 13.8	Approx. 56	Approx. 250,000
T1 Boost	☀	Up to 23	Approx. 11.9	Approx. 13.0	Approx. 55	Approx. 370,000
T1 mini	☀	Up to 20	Approx. 10.2	Approx. 12.7	Approx. 54	Approx. 400,000
Types/REF.		Sirona connection	KaVo connection	W&H connection	NSK connection	
T1 CONTROL		63 86 598	63 86 754	63 86 770	63 86 812	
T1 Boost		63 86 606	63 86 911	63 86 929	63 86 937	
T1 mini		63 86 630	63 86 994	63 87 000	63 87 018	
Sirona quick coupling/REF.		R, units with exhaust of drive air		R [LED], units with exhaust of drive air		F, units without exhaust of drive air
4 hole standard connection with light, spray regulation, and with anti-retraction stop		18 94 588		63 19 706		41 74 467

# DENTAL TURBINES.

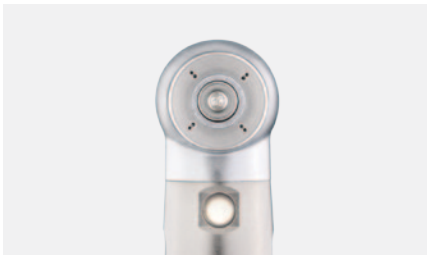


## T2 TURBINES – QUALITY YOU CAN RELY ON.



You can rely on our Comfort Class turbines for any situation. This is ensured by the continuous high performance, the ergonomic shape together with the titanium-coated exterior sleeve, as well as the robust workmanship of our turbines.

- Excellent grip thanks to the titanium-coated exterior sleeve
- CONTROL function: continuous operation at low noise level
- Robust ceramic ball bearings
- Optimal illumination for great visibility during treatments
- Protective-Head-System (PHS) with dual anti-retraction stop
- Perfect hygiene: can be sterilised and heat disinfected
- Click&Go: The fast change to Sirona



Low noise level: T2 turbines with 4-nozzle spray

## T2 TURBINES – TECHNICAL DATA OVERVIEW:



Types		Power (W)	Head diameter (mm)	Head height (mm)	Weight (g)	Non-load speed (min <sup>-1</sup> )
T2 CONTROL ☼		Up to 22	Approx. 12.4	Approx. 13.8	Approx. 57	Approx. 250,000
T2 Boost ☼		Up to 23	Approx. 11.9	Approx. 13.0	Approx. 56	Approx. 370,000
T2 mini ☼		Up to 20	Approx. 10.2	Approx. 12.7	Approx. 55	Approx. 400,000
Types/REF.		Sirona connection	KaVo connection	W&H connection	NSK connection	
T2 CONTROL		63 86 648	63 87 737	63 87 752	63 87 760	
T2 Boost		63 86 655	63 87 778	63 87 786	63 87 794	
T2 mini		63 86 663	63 87 802	63 87 810	63 87 828	
Sirona quick coupling/REF.			R, units with exhaust of drive air	R (LED), units with exhaust of drive air	F, units without exhaust of drive air	
4 hole standard connection with light, spray regulation, and with anti-retraction stop			18 94 588	63 19 706	41 74 467	



## T3 TURBINES – CONSISTENCY THAT PAYS OFF.



The titanium-coated turbines of the Economy Class are easy to clean and have a good grip. Up to 23 watts of power and ceramic ball bearings ensure efficient work for a long time. In other words: lasting efficiency.

- Easy to clean titanium surface
- Good grip
- Durable ceramic ball bearings
- Protective-Head-System (PHS) with dual anti-retraction stop
- Perfect hygiene: can be sterilised and heat disinfected
- Click&Go: The fast change to Sirona



Extremely quiet: T3 turbines with 4-nozzle spray

## T3 TURBINES – TECHNICAL DATA OVERVIEW:



Types	Power (W)	Head diameter (mm)	Head height (mm)	Weight (g)	Non-load speed (min <sup>-1</sup> )
T3 Boost	Up to 23	Approx. 11.9	Approx. 13.0	Approx. 56	Approx. 370,000
T3 mini	Up to 20	Approx. 10.2	Approx. 12.7	Approx. 55	Approx. 400,000
Types/REF.	Sirona connection	KaVo connection	W&H connection	NSK connection*	
T3 Boost	63 87 919	63 87 927	63 87 935	63 87 943	
T3 mini	63 87 950	63 87 968	63 87 976	63 87 984	
Sirona quick coupling/REF.				B, units without exhaust of drive air	
4 hole standard connection without light, without spray regulation and with anti-retraction stop				58 61 724	

\* NSK QD-J® = registered trademark of the NSK company.



# T1/T2 CONTROL – THE POWER LIES IN CONSISTENCY.

Less is more. The patented CONTROL function ensures one-of-a-kind torque and continuous powerful preparation. With constant high torque at a speed of 250,00 rpm, Sirona shows that the power of a turbine in no way depends on the pure rotation speed. You can drill quickly – without stopping to pick up speed again – that way you save valuable work time.



NO VIBRATION

NO THERMAL  
DAMAGE

MORE PLEASING  
SOUND

# HYGIENE AND MORE.

## DAC UNIVERSAL.

The DAC UNIVERSAL combination autoclave cleans, lubricates and sterilizes turbines, handpieces and contra-angle pieces from numerous manufacturers in one fully automatic process at the touch of a button. In this way, you can relieve the work load on your team, save consumables and prolong the service life of your instruments.

- Absolutely safe
- Very clean
- Remarkably fast



## DAC UNIVERSAL – TECHNICAL DATA OVERVIEW:

Types	Equipment	Power consumption	Water quality	Width/depth/height opened	Compressed air connection
DAC UNIVERSAL	DAC UNIVERSAL	1.1 kW	De-mineralised or distilled water [ $< 3 \mu\text{S}$ ]	37 cm/38 cm/53 cm	5 to 8 bar

## SIROInspect.

For a safe caries checkup. The SIROInspect with FACE® technology reliably prevents secondary caries. Fluorescent light indicates all carious areas right away and on a large scale. So you can make a professional decision – if and where there really still is a need for dental excavation. So all you need to do is drill where the bacteria actually are.

- Safe
- Fast
- Simple



## SIROInspect – SCOPE OF DELIVERY:

Types	Equipment
SIROInspect	[Incl. probe, battery charger with power adapter, 2 rechargeable batteries, 2 fibre optic sources 90°-sterilizable, 2 clip on filters]