

CAD/CAM SYSTEMS | INSTRUMENTS | HYGIENE SYSTEMS | TREATMENT CENTERS | **IMAGING SYSTEMS**

SUCCESSFUL IMPLANTATION IN THE COMPUTER-AIDED PRACTICE

CEREC meets GALILEOS

The Dental Company

sirona.

Let's assume that CEREC was only the first step

With CAD/CAM, you have made your practice independent. Prosthetics and profitability go hand in hand with CEREC. Imagine expanding this successful concept to implantology as well. But basing your CEREC restorations on outside planning? That wasn't your idea of independence. Time for the next step: CEREC MEETS GALILEOS.

Connecting CEREC and GALILEOS means:

- Reliable diagnostic capabilities with 3D conebeam imaging
- Simultaneous prosthetic and surgical planning
- Conclusive and persuasive patient counseling
- Time-saving implantation, including self-made CEREC drilling templates in the near future
- Chairside supraconstructions (provisional restorations, individual abutments, definitive treatment)

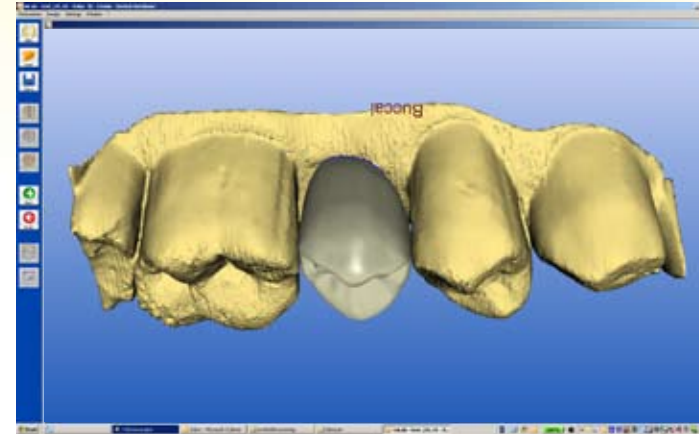


5 times more reliability

Reliability plays an ever-increasing role in implantation – for patients as well as for the dental practice:

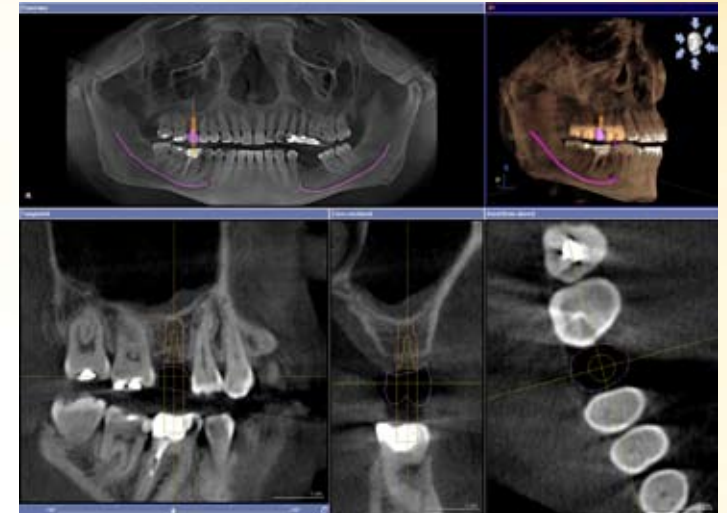
- Reliable diagnostics in 3D: Seeing and knowing more can be a priceless factor of safety in difficult cases.
- Reliable patient counseling: Your certainty and ability to explain your decisions comprehensibly are strongly convincing.
- Reliable implantation: Risk-free thanks to clear diagnostics and the use of a drilling template – with no additional time needed. With CEREC, the process is shortened and simplified.
- Reliable results – surgically as well as prosthetically: The results match the patient's expectations, and each implant's lifetime increases due to the reduction of unfavorable stress.
- Reliable recommendations: Whenever high expectations meet up with perfect results, word gets around quickly.

This reliability results from the close connection between CEREC and GALILEOS. Your investment pays off even sooner than expected.



CEREC

Creating a precise optical impression is convincingly simple with the new CEREC AC. While the renowned CEREC 3 acquisition unit is optimized for single tooth restorations, the new AC's Bluecam technology provides the basis for planning two or more adjacent implants. The crown design and model are then exported for use in GALILEOS Implant with the essential accuracy. This gives you the certainty that the desired prosthetics can be achieved – through consideration of the neighboring teeth and antagonists during implant planning. CEREC meets GALILEOS.



GALILEOS

3D conebeam images taken with GALILEOS already offer a high degree of certainty for implant planning. The importing and superimposition of CEREC data goes one major step further: The simultaneous display of the X-ray image (from GALILEOS), the gingiva and planned prosthetics (from CEREC) makes it possible to perfectly evaluate both the surgical and the aesthetic situation. Optimize your implant treatment prior to surgical intervention. CEREC meets GALILEOS.

10 times more profitability

The connection of CEREC and GALILEOS affects the entire practice – from the initial diagnosis to the definitive treatment of implants.

- Refer fewer surgical cases: Better risk appraisal and management through diagnosis with GALILEOS.
- Spend less with consultation: Adding the CEREC data to a conebeam image makes it more understandable and convincing.
- Boost your business with a high acceptance rate: Just one additional patient per month pays off noticeably.
- Reduce patient loss. The longer the patient waits for treatment, the greater the probability that he will consult one of your colleagues in order to obtain a second opinion. One less appointment in the course of implant treatment reduces this risk.
- Save time on each surgical case with the use of an effective drilling template.

- Increase your earnings by making your own drilling templates: This new application is already in the clinical test phase and will be available in the near future.
- Save time and make more through provisional restorations, individual abutments and definitive treatment.
- Gain new patients through increased recommendations: Patients whose expectations are met by your treatment performance will recommend your practice to others. There is no simpler or less expensive way to advertise.
- Avoid unexpected difficulties and uncomfortable situations. Better patient management and fewer complaints save time.
- Increase your acceptance rate to 100%. Dissatisfied patients or court cases cost time and money. Avoid the stress altogether by delivering exactly what you promised every time.

CEREC meets GALILEOS offers more advantages than the combination of prosthetic and surgical implant planning. Connecting reliability and profitability increases your chances of success and insures the future of your practice.



Optical impression



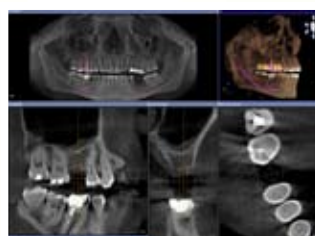
Crown design based on the antagonist and neighboring teeth



Diagnosis with GALILEOS



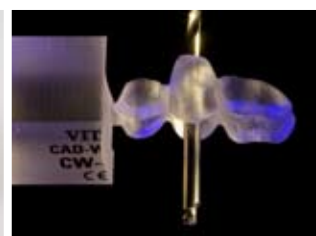
Superimposition and simultaneous planning



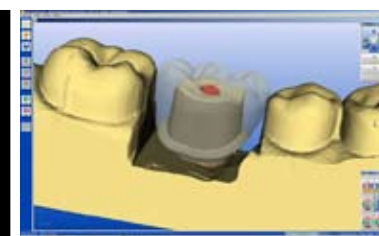
Patient education made easy with GALILEOS images



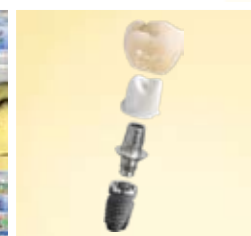
Precise surgical guide (www.sicat.de)



Drilling template made with CEREC (prototype in clinical research)



Individual abutment made with CEREC Connect and inLab (not yet available in all countries)



Provisional restoration made with CEREC



Definitive treatment with CEREC or inLab



CAD/CAM SYSTEMS | INSTRUMENTS | HYGIENE SYSTEMS | TREATMENT CENTERS | IMAGING SYSTEMS

SIRONA – UNIQUE WORLDWIDE SYSTEMS EXPERTISE IN DENTAL EQUIPMENT PRODUCTS

Sirona develops and manufactures a comprehensive range of dental equipment, including CAD/CAM Systems for dental practices (CEREC) and laboratories (inLab), Instruments and Hygiene Systems, Treatment Centers and Imaging Systems. Sirona manufactures high technology products that guarantee ease of use and a high return on investment – for the good of your practice and for the benefit of your patients. In this way, you can approach every challenge that you face, confident in the knowledge that: **Enjoy every day. With Sirona.**

Sirona Dental Systems · Fabrikstrasse 31 · D-64625 Bensheim
E-mail: contact@sirona.de · www.sirona.com

The Dental Company

sirona.